

HOUSTON INDEPENDENT SCHOOL DISTRICT



Westbury High School

ADDITIONS / RENOVATIONS



Academic Excellence – Westbury High School will empower all students to cultivate personal and group identities by offering vibrant performing and visual art programs, competitive UIL academic and athletic teams, and professional certification and internship opportunities.

Safety – Improvement of safety and academic excellence will be drawing points for students who select Westbury as their school of choice.

Global Awareness – Westbury’s Career and Technical Education programs will increase students’ global awareness by providing real-life experiences, technical expertise, and opportunities for professional certifications.

Equity – Westbury supports excellence in academics, sports and extra-curricular activities for all students, whether male or female, native born, or from another country.

Interactive Technology – Westbury students will utilize wide-spread, digital technology to improve learning quality and prepare for college and careers.

Community – Westbury High School will build, nurture, and maintain collaborative relationships with area elementary and middle schools, Westbury community organizations, and businesses throughout greater Houston.

Entry & Identity - Redefine entry access and identity as a way-finding tool & security element

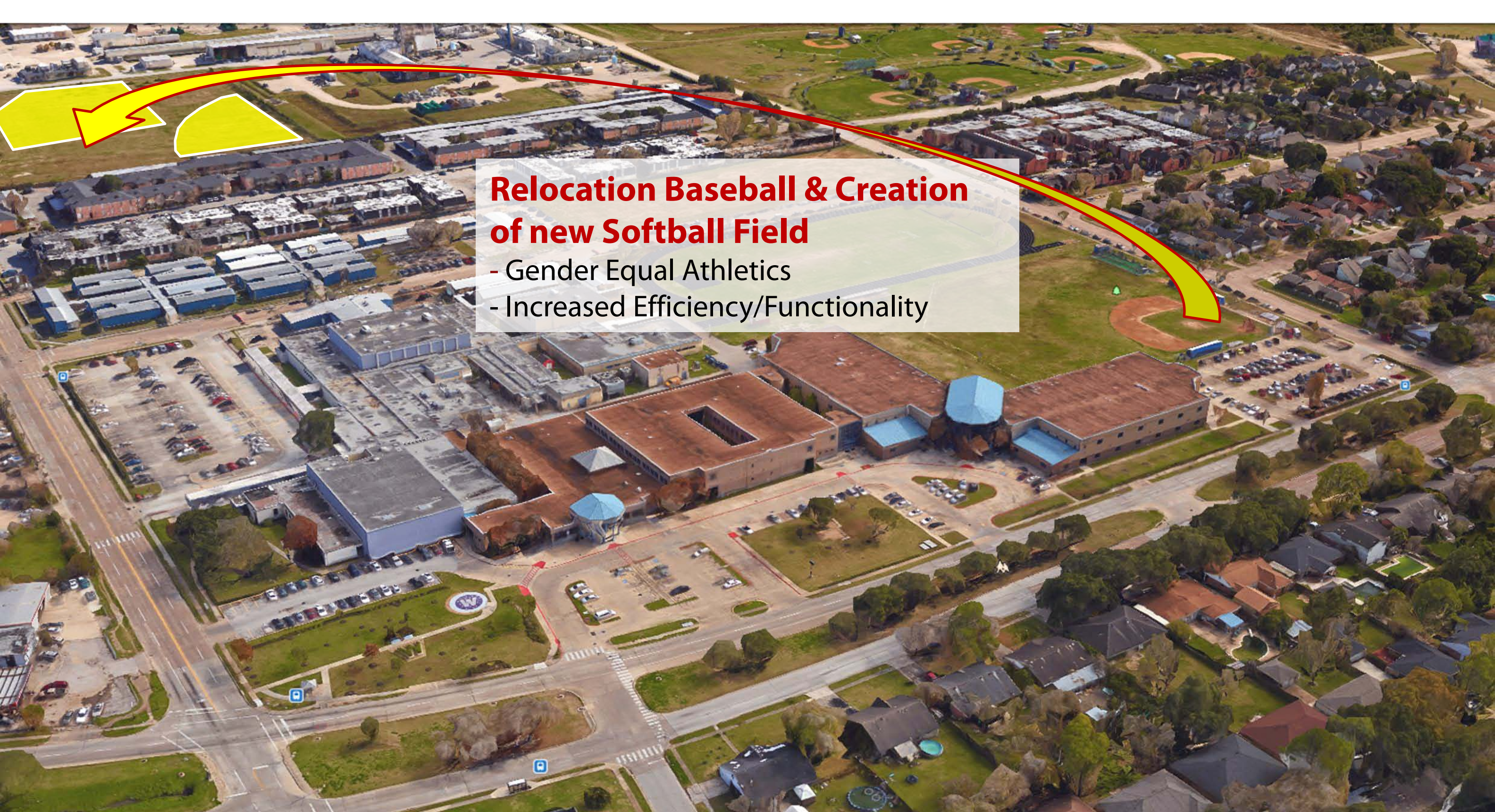


21st Century Learning - Enhance learning opportunities through access to natural daylight, varied learning environments, and multi-use spaces that connect daily activities to learning.



Project Phasing & Functional Site - Placing the new addition @ the existing baseball field site means activities in the existing school will not be disturbed during construction. It also provides opportunity to address site access and student arrival points.





An aerial photograph of the Westbury High School campus. The image shows several large, interconnected school buildings with flat roofs. A prominent yellow and red curved arrow originates from a semi-transparent text box in the upper left and points towards a blue rectangular area in the center-right, which represents a 'New Addition'. The surrounding area includes parking lots, green spaces, and residential neighborhoods with houses and trees.

Relocation of Dining/Locker Rooms/Gyms

- Gender Equal Athletics
- Increased Efficiency/Functionality

New Addition

- Replaces T-buildings with 21st Century Learning Centers
- Complements Existing Design



Relocation of Main Admin

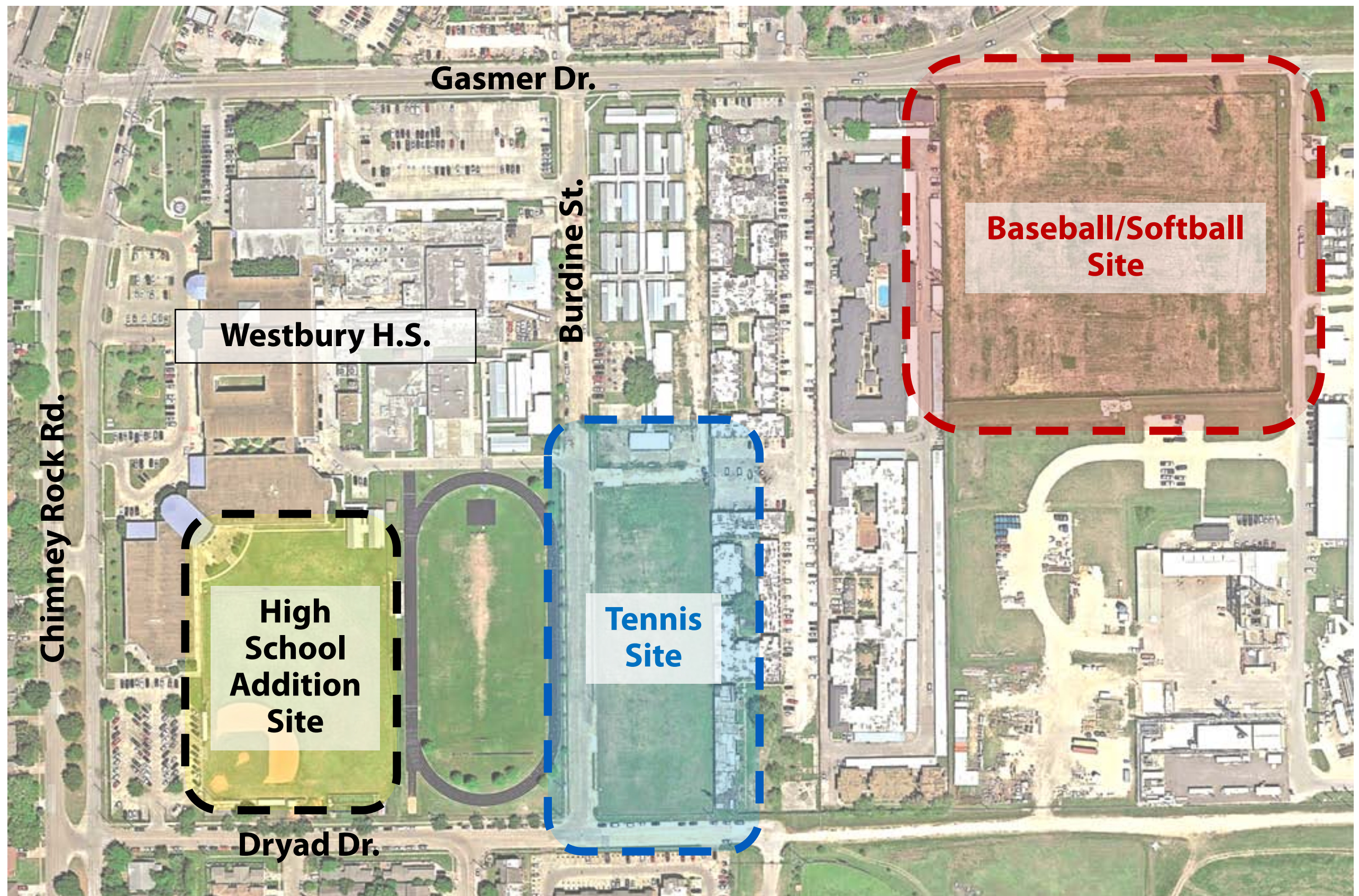
- Renovate Existing Admin into new Community Room & Teacher Work Area

Admin Renovation

- Opportunity to Redefine vehicle circulation
- Shift Focus from Old Entry to New Entry with Signage and simple architectural renovations



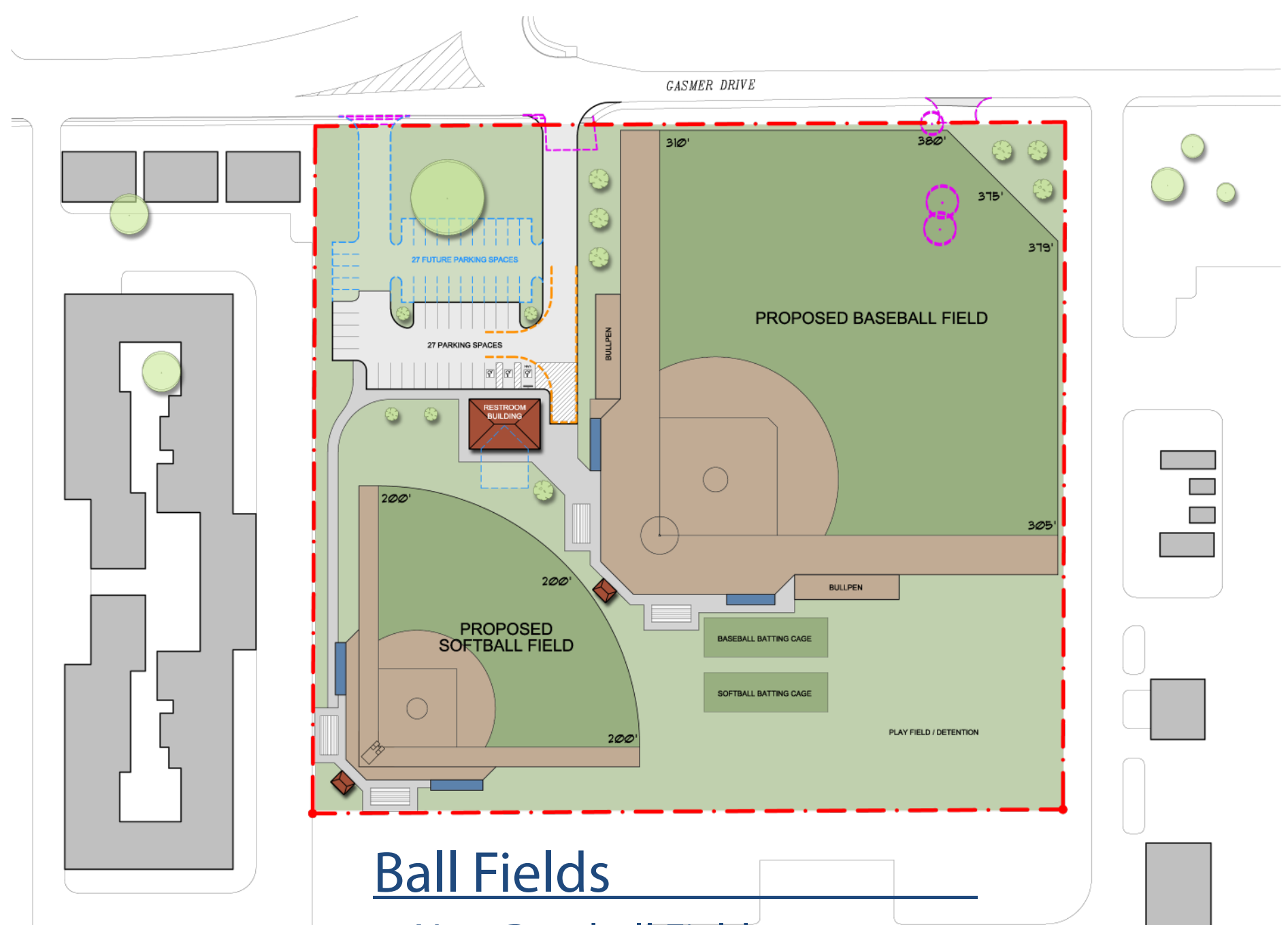
Removal of T-Buildings
- Reclaim Campus Green Space





Tennis

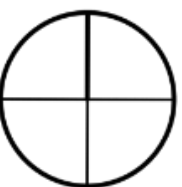
- 6 New Tennis Courts
- Practice Surface
- Covered Bleacher Seating



Ball Fields

- New Baseball Field
- New Softball Field
- Batting Cages
- Restroom/Storage Building
- Parking

N



Athletics Package Update

WESTBURY HIGH SCHOOL



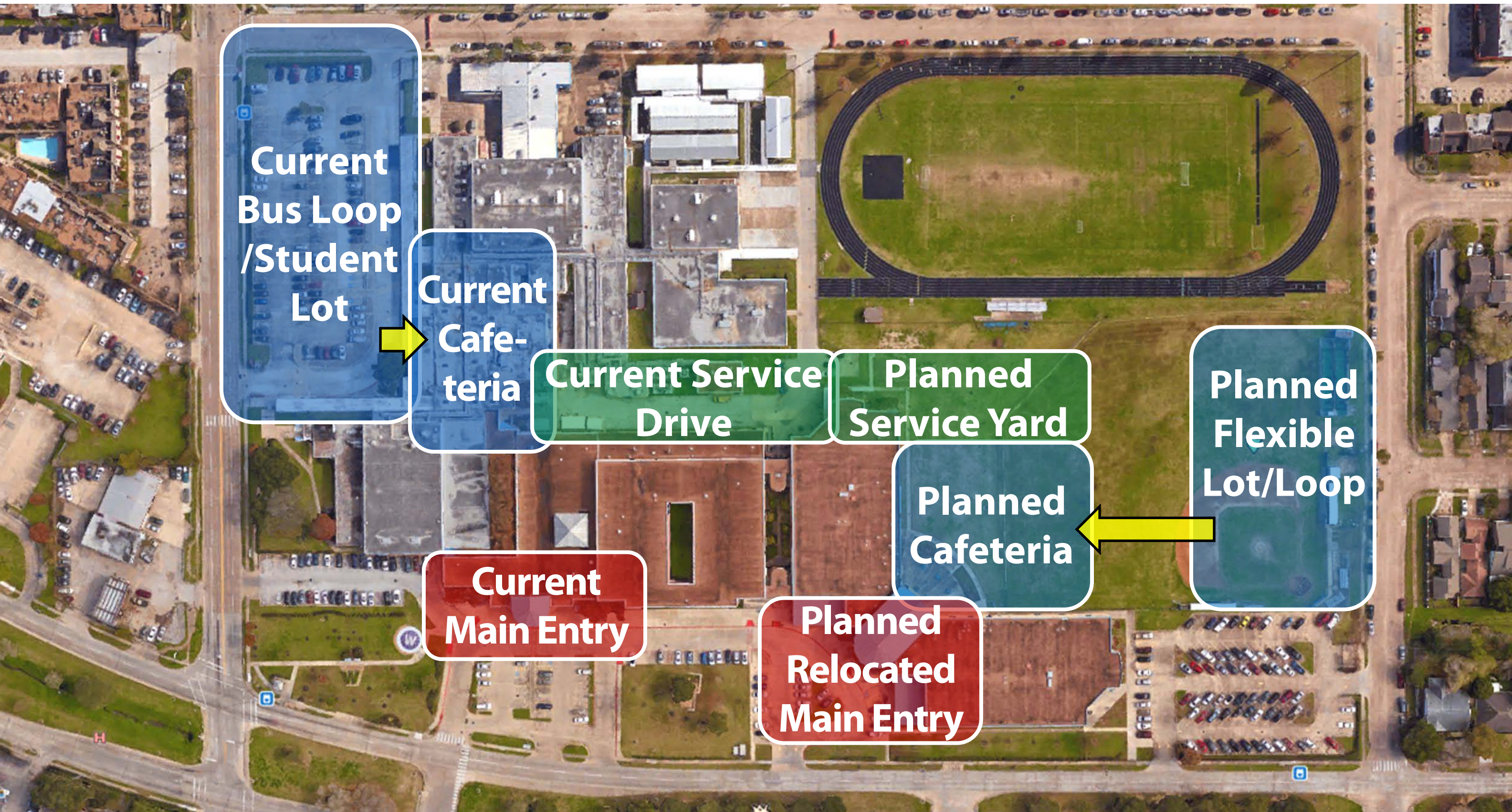
Campus / HISD
/ Community
Feedback

21st Century Learning. Connected. Open. Extended.



21st Century Learning. Connected. Open. Extended.





**Current
Bus Loop
/Student
Lot**

**Current
Cafe-
teria**

**Current Service
Drive**

**Planned
Service Yard**

**Planned
Flexible
Lot/Loop**

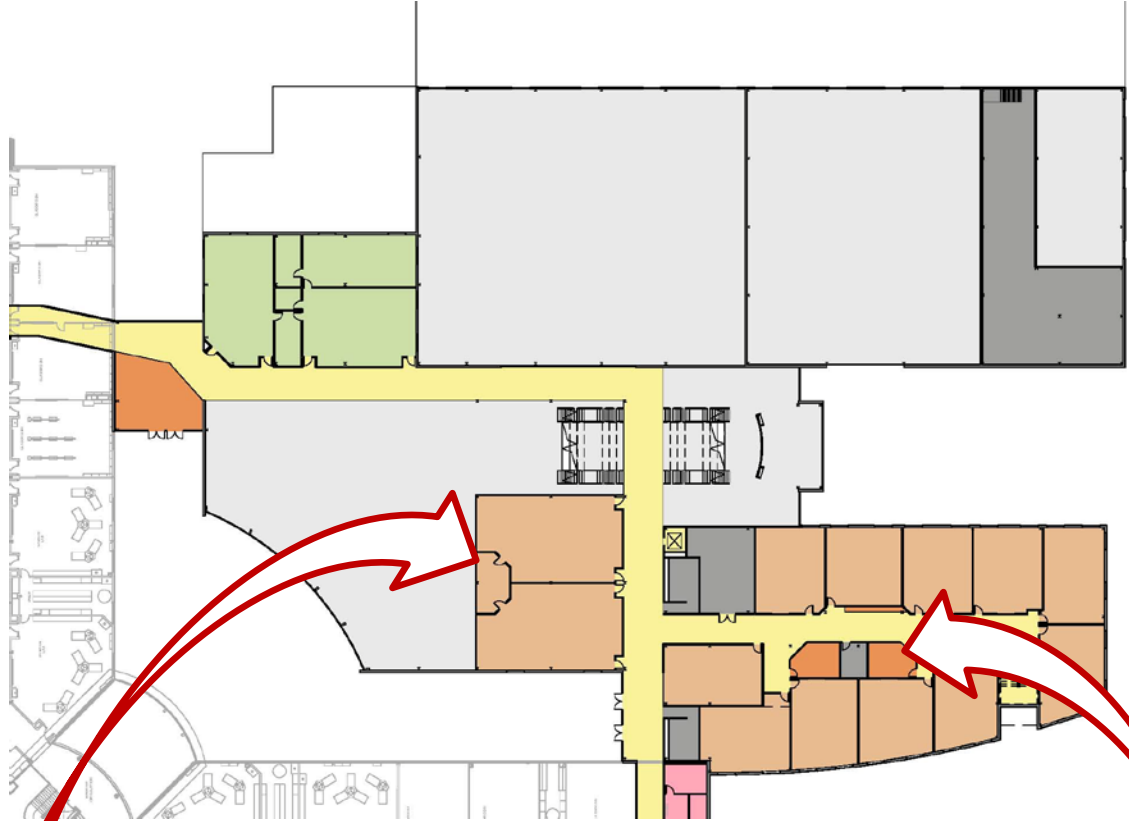
**Planned
Cafeteria**

**Current
Main Entry**

**Planned
Relocated
Main Entry**

Legend

- Admin/Faculty
- Athletics
- Cafeteria/Commons
- Circulation
- Extended Learning
- JROTC
- Kitchen
- Learning Centers
- Lockers
- Utility/Storage
- Health Science
- Open to Below



2nd Floor Concept



1st Floor Concept



